

Solar Division



*Image Source :
Kriti Photo, Raipur.*

Our Quality :

The main factor on which R.R. Ispat (A Unit of GPIL, Raipur) delve, the inner strength and the inevitable requirements is the quality that we maintain in our products like Solar Irrigation Pump structure, Solar Dual Pump Structure, Upto 765KV Transmission Line Tower Structure etc.

Our main objective is to produce strictly in accordance with the specifications given by our customers and which adheres to the quality control practices followed by us.

Our Products

- Solar Irrigation Pump Structure
- Solar High Mast Pole
- Solar Controller
- Solar Panel Mounting Structure
- Solar Plant Structure
- Transmission Towers
- Railway OHE Structures
- Sub Station Structure
- Single Pole Towers
- Three Legged Pole Type Towers
- H-Frame
- Adjustable U Jacks
- Railway Jacks
- Lock Pins
- Earthing Strips
- Dual Pump Structure (3mtrs, 4.5mtrs and 6mtrs)
- Street Light Pole (3mtrs, 6mtrs and 9mtrs, as per requirement)
- Solar Rooftop Structure
- Solar Water Heater Structure
- Galvanized Transmission Line Tower
- Telecom Towers
- Rural Electrification Structures
- Pole Type Guyed Towers
- Centering Plates
- Walkway Planks
- Adjustable Base Jacks
- Spanners
- Scaffolding Items
- Earthing Plates
- All Kind of Structural Works

Capacity

Fabrication

1,00,000 Sets of	Solar Pumps / Irrigation / Dual Pump Structure
100-200 MW of	Megawatt Project / Roof top / Car Parking / Solar Tree Structures

Hot Dip Galvanizing : 85 - 120 microns

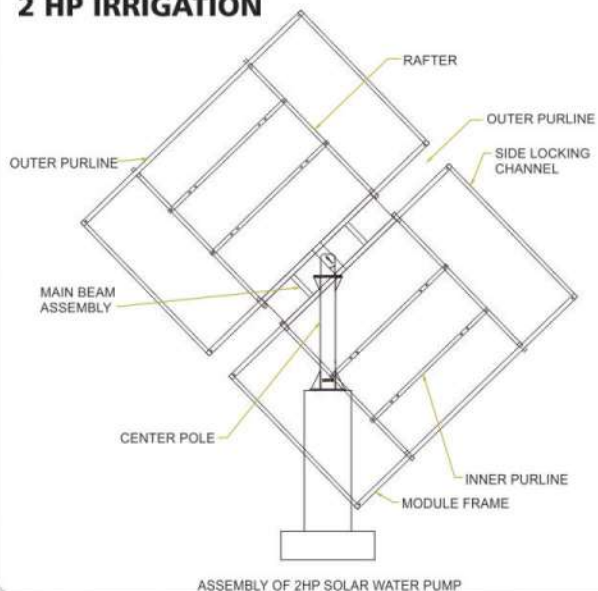
Zinc Kettle Size

(i)	Length 7.0 mtrs	Width 1.2 mtrs	Depth 1.2 mtrs
(ii)	Length 13.5 mtrs	Width 1.2 mtrs	Depth 1.4 mtrs
(iii)	Length 13.5 mtrs	Width 1.5 mtrs	Depth 2.5 mtrs

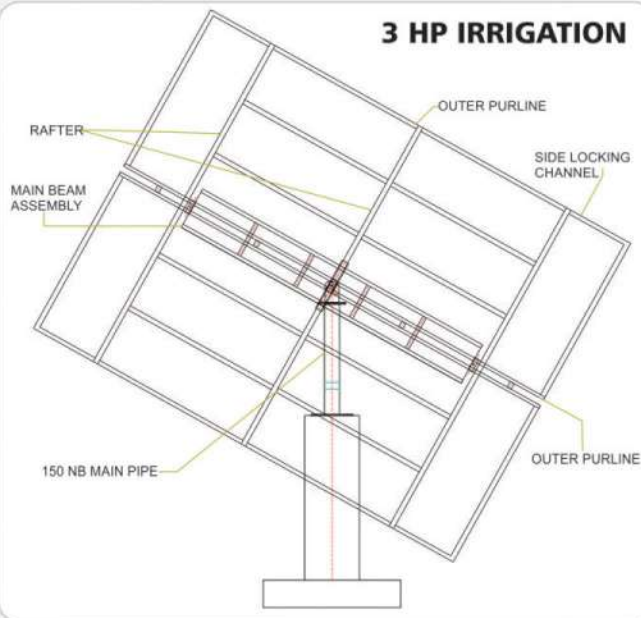


Image Source :
Niranjan Dharmshala, VIP Road, Raipur.

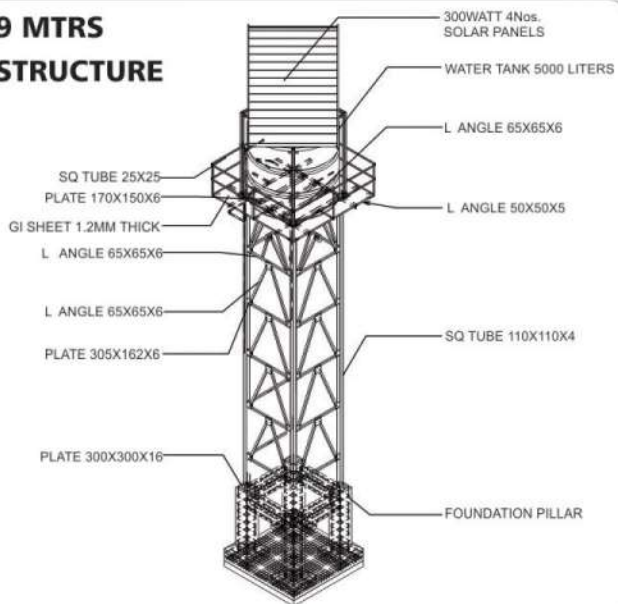
2 HP IRRIGATION



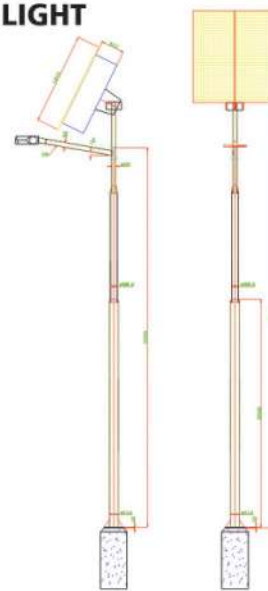
3 HP IRRIGATION



9 MTRS STRUCTURE



SOLAR STREET LIGHT



Plasma Cutter



Solar Irrigation Structure 3hp

"Our design cell is equipped with latest facilities and qualified engineers who work on designing panels confirming to relevant IS specifications."

The design section is an integral part of our initiatives which is the development of new products and improvements in the existing product range by which company is able to deliver high quality reliable and cost effective products.

We take the pleasure to walkout to walk the extra mile to meet the need of our customers.



Image Source :
CREDA Office, VIP Road, Raipur.

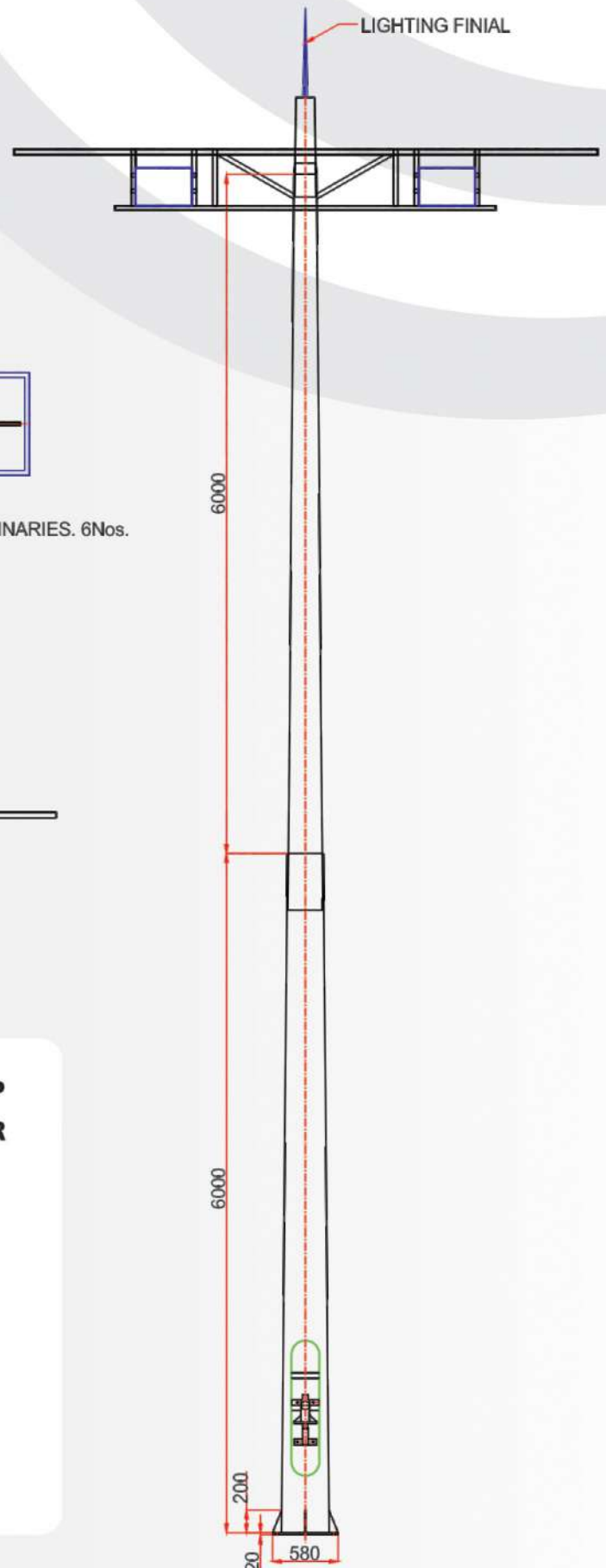
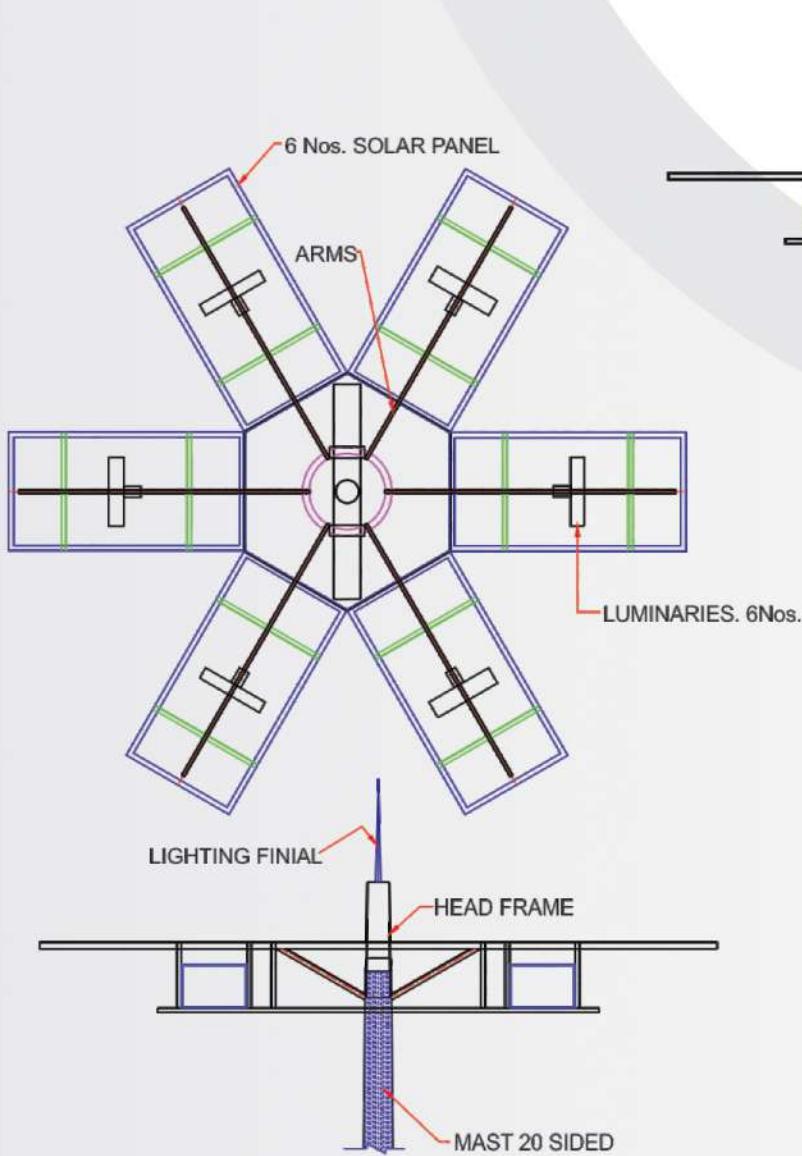


Image Source :
Niranjan Dharmshala, VIP Road, Raipur.

Our Sound Infrastructure :

"Our manufacturing plant spread over an area of 50000 Sq. meters with state-of-the-art facilities, tools and equipment's which form the backbone of our growth."

SOLAR HIGH MAST POLE DESIGNED by RR ISPAT, registered in CREDA



**SOLAR PUMP
CONTROLLER**

Our Commitment to Customers :

Always supply quality products to customers in accordance with agreed terms. Honor customer's feedback to improve our products and services. Consistently improve the products, processes and systems to meet and exceed customer requirements. Up-gradation of process & infrastructure to meet the growing demands as well as to deliver exceptional quality, service at all stages. Ensure the complete customer satisfaction and in-time delivery remains our core focus area.



"We are an ISO 9001:2008, 14001:2015, 18001:2007 certified company & we have achieved these certification to practicing quality oriented manufacturing methods and for duly following corporate ethics".

